

# "BERRIES and CREAM"

## "BLOOMING DOTS"

### PURSE...by

Susie

For BATIK TEXTILES

#### Fabrics:

Cream and Turquoise small Dot-----1/2 yard

Cream and Turquoise Swiss Dot-----1/2 yard

Cream and Turquoise Regiment Dot---1/2 yard

Dark Purple Contrast-----1/2 yard

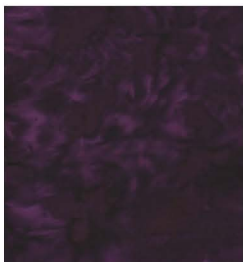
Turquoise Blender-----1/2 yard

1 1/8 size covered button

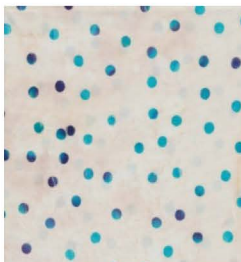
2" velcro

1/2 yard batting or stablizer

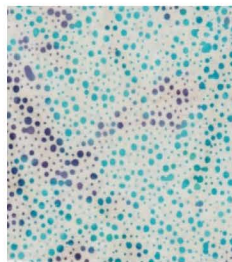
### Berries and Cream



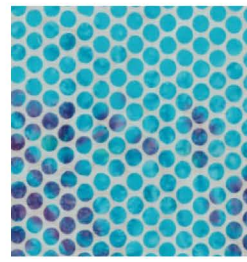
#7254B  
contrast



#3202



#3203



#3204



#5159B

\*this pattern is available as a free download from  
BATIK TEXTILES  
at [batiktextiles.com](http://batiktextiles.com)

# Amended page for BERRIES and CREAM 'BLOOMING DOTS' PURSE

## FLOWER PETALS:

You need 5 flowers petals of **#5159B (turquoise)** --- 5 of the **contrast color (#7254B)** and 5 of the batting. Place the 2 different fabrics RST, the batting on the back and sew around the petal –leaving marked end open for turning right side out. Repeat for all 5 petals. Turn right side out and press.

## STRAPS :

Cut 2 strips from Regiment dot **#3204** @ 2"x27" each. Following the cutting/layout chart for the contrast fabric—cut 2 the same as the Regiment dot- of the contrast fabric. Use a contrast and a Regiment dot for each strap. Place one of each, RST, and sew lengthwise. Press seam open . Lay strip of batting 3"x27"on wrong side , over pressed open seam-centering it. Fold at seam lengthwise, pin, press and topstitch ¼" from folded edge. Turn in raw edges on open edge until strap measures 1" wide. Pin, sew/top stitch closed ¼" from edge. Repeat for 2<sup>nd</sup> strap.

### FRONT STRIP ORDER

left to right

1. #3203 (swiss dot).....3"x14"
2. #3202 (small dot)...2 ¼"x14"
3. #5159B (turquoise).....2 ¾"x14"
4. #3203 (swiss dot).....3"x14"
5. #3202 (small dot).....3 ¼"x14"
6. #3204 (regiment dot)...5 ½"x14"

Purple lines indicate placement order of folded **contrast** strips

NOTE: Every place where the main pattern calls for #8008B (black) substitute **#5159B** (turquoise blender) The **CONTRAST** color on this purse is Dark Purple. **#7254B**

### BACK STRIP ORDER

left to right

1. #3202 (small dot)....4"x14"
2. #3204 (regiment dot).....3 ¾"x14"
3. #5159B (turquoise).....2"x14"
4. #3203 (swiss dot).....1 ½"x14"
5. #3202 (small dot).....3 ½"x14"
6. #3203 (swiss dot).....2 ½"x14"
7. #3204 (regiment dot).....3"x14"



# INSTRUCTIONS for “BLOOMINGDOTS” PURSE

This purse is made by sewing different size strips of DOT batiks together on a backing of batting to measure 14” high and 17” wide. It is recommended to use a **walking foot** in the construction of the purse when sewing with the batting. **All seams are 1/4” UNLESS** otherwise noted.

## IMPORTANT:

There is a Cutting/Layout on next page for the **Contrast fabric only** as that fabric has to be cut **AS SHOWN** or you will not be able to get all the pieces from 1/2 yard. **Note the direction of placement for each piece.**

The Layout Chart is not to scale. (ie; when you have cut the lining pieces- you only have 4” left from the width—2 straps @ 2”x27” takes all of that 4”)

**TEMPLATES** are on the last page for the flower petals, flower center and the top and bottom corners of the purse.

## FLOWER PETALS:

You need 5 flowers petals of #8008B (black) --- 5 of the contrast color and 5 of the batting. Place the 2 different fabrics **RST**, the batting on the back and sew around the petal -leaving marked end open for turning right side out. Repeat for all 5 petals. Turn right side out and press.

## STRAPS:

Cut 2 strips from Medium dot #3238 @ 2”x27” each. Following the cutting/layout chart for the contrast fabric—cut 2 the same as the Medium dot- of the contrast fabric. Use a contrast and a medium dot for each strap. Place one of each, **RST**, and sew lengthwise. Press seam open. Lay strip of batting 3”x27” on wrong side, over pressed open seam-centering it. Fold at seam lengthwise, pin, press and topstitch 1/4” from folded edge. Turn in raw edges on open edge until strap measures 1” wide. Pin, sew/top stitch closed 1/4” from edge. Repeat for 2<sup>nd</sup> strap.

## FRONT STRIP ORDER

left to right

1. #3239 (swiss dot).....3”x14”
2. #3240 (random dot)...2 1/4”x14”
3. #8008B (black).....2 3/4”x14”
4. #3239 (swiss dot).....3”x14”
5. #3240 (random dot)...3 1/4”x14”
6. #3238 (medium dot)...5 1/2”x14”

## NOTE:

Green lines indicate placement order of folded contrast strips

1" strips 4 needed

Petals—5 needed of contrast and 5 needed of #8008B black

Contrast  
lining  
14"x17"

17"

14"

Contrast  
lining  
14"x17"

17"

14"

Button cover

2 straps— 2"x27" each

18"



## BACK STRIP ORDER

left to right

1. #3240 (random dot)....4"x14"
2. #3238 (med. dot).....3 3/4"x14"
3. #8008B (black).....2"x14"
4. #3239 (swiss dot).....1 1/2"x14"
5. #3240 (random dot)....3 1/2"x14"
6. #3239 (swiss dot).....2 1/2"x14"
7. #3238 (med. dot).....3"x14"

To create the front and back pieced panels you will sew the strips, from left side of panel to right-in order given. If you are using batting or "soft and stable"-your batting piece should be cut at 14"X17"-start with the 1<sup>st</sup> strip and place it on the far left side of your batting, as shown in **Diagram A**.

Take the next strip in the order given and place it, RST, on the 1<sup>st</sup> strip matching raw edges on the right side -as shown in **Diagram B**.

Sew from top of strip to bottom on right side. **Diagram C**. Press out.



**Diag. A**



**Diag. B**



**Diag. C**



Place a 1" x14" (folded in half lengthwise) contrast strip-matching raw edges -on top of previous strip. Sew. Do not press out. Place next strip in order on top of this, sandwiching the contrast fold in between as shown. Sew. Press this strip out.

Continue repeating the same steps for each strip...pressing out every strip-except the fold flap (contrast fabric) Placement of these are indicated by **Green Line** in strip order chart. Once the Front and Back are constructed, trim edges to equal 14" tall and 17" wide.

Use templates on page 5 to trim corners of purse front and back/top and bottom. Diagram is shown on page 4.

# FOR PLACEMENT OF FLOWER PETALS:

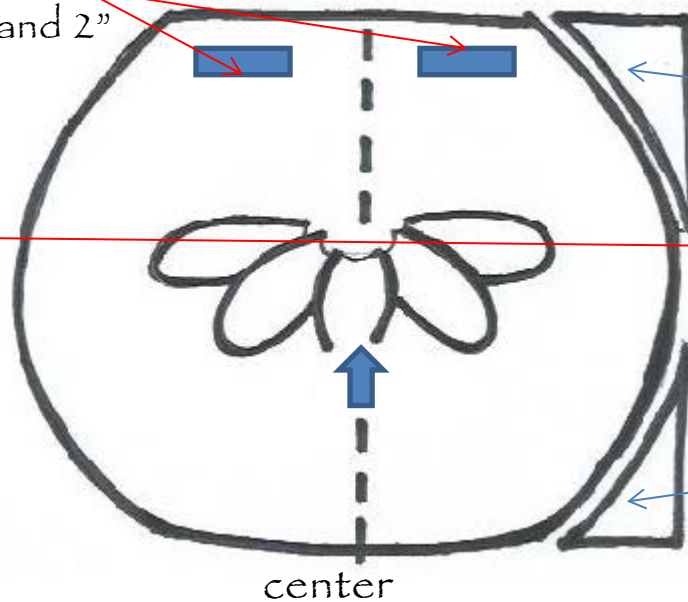
Measure up from bottom of FRONT- 8" and draw a line. Mark center of front panel also. (I press panel in half, matching the sides, and use my fold line as reference for center.) Place 1 flower petal on each side of center- 1/2" from center mark and covering line drawn 8" up. Next 2 petals over-lap the 1<sup>st</sup> two and the final one is placed vertically over center fold line. **Top stitch each petal from center-raw edge as shown on template.**

See Diagram below.

Strap placement:

3" in from side and 2" down from top

Line-8" up



Top corner template

Bottom corner template

center

**To finish the flower center**—sew the 2 center ovals (#8008B) RST, leave small opening to turn right side out. Press.

Center over raw edges of flower petals and top stitch down. To center piece—Sew on button covered with contrast fabric.

Referring to Diagram/drawing above for **STRAP PLACEMENT**. The strap is tacked down 3" in from sides and 2" down from top. Sew on top of bag front 1 strap, Medium Dot side up. **Repeat for back.** Be careful not to twist strap when attaching to purse.

Now sew **FRONT** and **BACK** pieces, RST - reinforcing top of sides with backstitch. Turn right side out.

## LINING and POCKET:

**POCKET:** Cut 2 pieces from one of the dot fabrics @ 6"x12" each. RST, sew together-leaving 1 1/2" opening on the long side, for turning right side out. Turn and press.

**LINING:** Use Templates for top and bottom corners on lining pieces. Trim.

On one of the lining pieces...find center and mark. Position pocket just made  $3\frac{1}{2}$ " up from bottom, centering it, with the opening at the bottom. Pin and top-stitch down the right side of the pocket, across the bottom and up the other side. Back stitch at start and stop to reinforce. Find center of pocket and stitch a seam line from top to bottom...creating 2 pockets.

Now sew the 2 lining pieces RST, leaving a 6" opening in the bottom for turning. Do not turn right side out. Slip the purse into the lining, RST; and match the top of the purse with the top of the lining- pin- keeping straps down and out of the way. Stitch all the way around the top. Pull the purse thru the opening of the lining. Press top edge and top stitch all the way around the top. Sew closed lining opening.

### STRAP COVERS:

Cut from Black (#8008B) 4 rectangles @  $2\frac{1}{2}$ "x6"

Fold each one in half to measure  $3$ "x $2\frac{1}{2}$ "

Sew around raw edges-leaving small opening for turning right side out..

Turn all right side out- press. Fold in half again to measure  $1\frac{1}{2}$ "x2" finished.

Place one over each of the raw ends of the straps on the front of the purse to cover and top stitch all around strap cover - encasing the ends of the straps and sewing thru purse, batting and lining. Position Velcro on inside between straps, matching front and back and sew.

