

Batik Textiles

presents

Starry, Starry Night



Size 82" x 82"

Quilt design by Susie Shkolnik.

Pattern & Fabric available at

www.BatikTextiles.com ~ info@BatikTextiles.com

© 2015 Susie Shkolnik

All rights reserved

Fabrics by **Batik Textiles**

Creators of Distinctive Handmade Fabrics

Fabric	Fabric Number	1 quilt	10 kits	15 kits	20 kits
	3301	3/4 yard	1 bolt	1 bolt	1 bolt
	3302	3/4 yard	1 bolt	1 bolt	1 bolt
	3303	1/2 yard	1 bolt	1 bolt	1 bolt
	3310	3/4 yard	1 bolt	1 bolt	1 bolt
	3312	1 1/3 yard	1 bolt	2 bolts	2 bolts
	3313	1 yard	1 bolt	1 bolt	1 bolt
	6689B	1/4 yard	1 bolt	1 bolt	1 bolt
	8210B	1/3 yard	1 bolt	1 bolt	1 bolt
	3237B	3/4 yard	1 bolt	1 bolt	1 bolt
	3346	4 yards	3 bolts	4 bolts	6 bolts
	3346 Binding	1/2 yard	5 yards	7.5 yards	10 yards
	7020B	1 1/2 yard	1 bolt	2 bolts	2 bolts
	7020B Backing	6 yards	4 bolts	6 bolts	8 bolts

1-800-775-5030 info@batiktextiles.com

www.BatikTextiles.com

[www.Facebook.com/BatikTextiles](https://www.facebook.com/BatikTextiles)

[www.Pinterest.com/BatikTextiles](https://www.pinterest.com/BatikTextiles)

BASIC INFORMATION:

This pattern is paper-pieced triangles...sewn together (two pairs of 2 color ways) to make blocks that are 14"X14". 4 Blocks form the center (with sashing consisting of 1 1/2" strip, 2"X2" squares ~separated by 1 1/2" spacers and another 1 1/2" strip.) There are 4-half Blocks surrounding the center (triangles made up of 2-mirror image, paper-pieced triangles) There are 4 more Blocks for the corners of the quilt.(made up of two pairs of 2 color ways) Total of: 8 pairs of Gold tones

8 pairs of Purple tones with purple points

4 pairs of Purple tones with blue points= 4 triangles bordering center

All triangle pairs are Mirror Image of each other.

The Stars/crosses are 9-patches made with 2 1/2"X 2" rectangles and a 2" center square .

Basic quilting knowledge is needed. Paper-pieced method is the "Flip and Fold" method used by **The Designers Workshop**. Freezer paper is used. If you have another way you prefer-please use your method to get the paper-pieced blocks completed.

All seams are 1/4". RST- Right sides together... .wof.--width of fabric.

NOTE: The patterns for the 2 paper-pieced triangles are in 2 parts. The "point" need s to be cut out- lined up- taped to the main body of the triangle and then traced on to freezer paper. This will give you the **exact size** rather than having to enlarge a smaller template to the correct size needed to equal a 9 1/2" X 9 1/2" X 14 1/2" triangle . The pieces to be paper-pieced **are not pre cut**. Cut pieces big enough to cover the specific section **as you need them**. (16 pieces **each** of the gold colorway and 24 pieces **each** for the blue/purple colorway.)

see "Fabric Amounts needed
for Paper-pieced blocks ".

SUPPLIES NEEDED/USED:

Add A Quarter (1/4") Ruler...by CM Designs

6 1/2" Triangle Square up...by Quilt in A Day

6"X24" Ruler with 45 degree angle lines

Cutting Mat...(with 45 degree angle lines

Box of Freezer paper for tracing and sewing paper pieced triangles—any Grocery

Store

Rotary cutter

Design Board/ Cloth hung up---very helpful!

To Begin:

Print out the 2 pages with the paper-pieced template of the 2 mirror image triangles. Cut them out and line up/ match the ends, tape together. Trace these on to freezer paper. You need a total of 8 of **each** Image ("A" and "B") and of **each** color. The color combinations are on the pattern with the total needed for each. Transfer that information on to your freezer paper.

Make your paper-pieced triangles in the colors listed and in the order listed on the templates. Stack in piles of "A" and "B" (Gold and Blue/purple.)

Step #1- Pair up your "gold" colorway triangles (A and B) and sew them, RST, from the top of the triangle (turquoise point) down the side that has the smaller strip ends. You will have 8 half-square triangles. (4 for corners...4 for Center)

Step #2- Repeat step #1 with "Purple" colorway (A and B) that has the purple triangle at the top. You will have 8 half-square triangles. (4 for corners...4 for Center)

Step #3- With seams pressed in opposite directions...RST; match and nestle center seam of a gold half-square triangle and a purple one. Sew together to make 1 square block. Repeat until 8 Blocks are made.

•There are 4 more sets of paper-pieced mirror-image triangles to be made that will be the Half-Square TRIANGLES that border the center.

These are made with Image "A" and "B" templates in the "blue" BUT- switching the fabric on section #1 to #7020B blue and section #4 to #3308B purple. REPEAT only step #1 for these blue/purple pairs. Set aside.

The 8 blocks will look like this



4 will be the center of the quilt and 4 will be the corners

See picture on page #2



Need 4 Half-Square Triangles around Center Section

Approximate Amounts of fabric Needed for Paper-Pieced Triangles/blocks :

* these are listed in the order they are used

Blue/purple ~~~

- 1/3 yard { #3237B purple... 1 strip @4" sub-cut:
8-4"x4" sq. then cut diagonally
#3237B purple..8 strips @2"x13"
- 3/4 yard : #3310 mum....24 strips @4"x9"
- 1 yard: #3313 dot...24 strips @ 2 1/2"x11"
- 3/4 yard { #7020B blue... 16 strips @ 2"x13"
#7020B blue... 1 strip @4" sub cut:
4-4"x4" sq. then cut diagonally
- 1 yard: #3312 leaves..24 strips @3"x13"

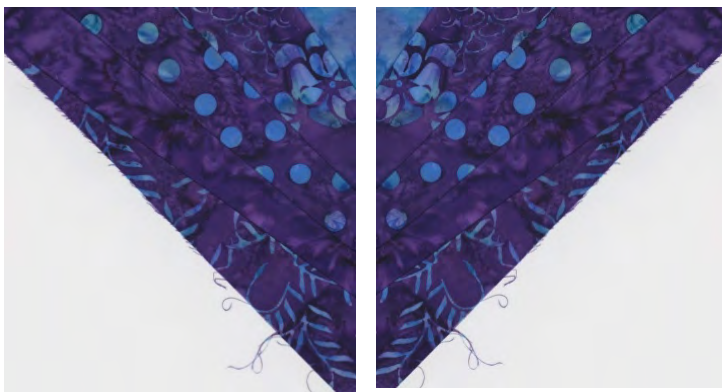
Gold-tones ~

- 1/8 yard: #6689B turquoise... 1 strip @4" sub-cut:
8-4"x4" sq. then cut diagonally
- 1/2 yard: #3303 meander. flower... 16 strips @ 4"x9"
- 3/4 yard: #3302 dot... 16 strips @ 2 1/2"x11"
- 1/3 yard: #8210B gold... 16 strips @2"x13" *

NOTE :Our batiks are 44" wide. Before using all this colorway-
cut off 5" x12" from 1 end leaving 12"x39" piece for your paper
pieced strips.. You will yield 3 strips of 13" per 39" length.

- 3/4 yard: #3301 nautilus... 16 strips @ 3"x13"

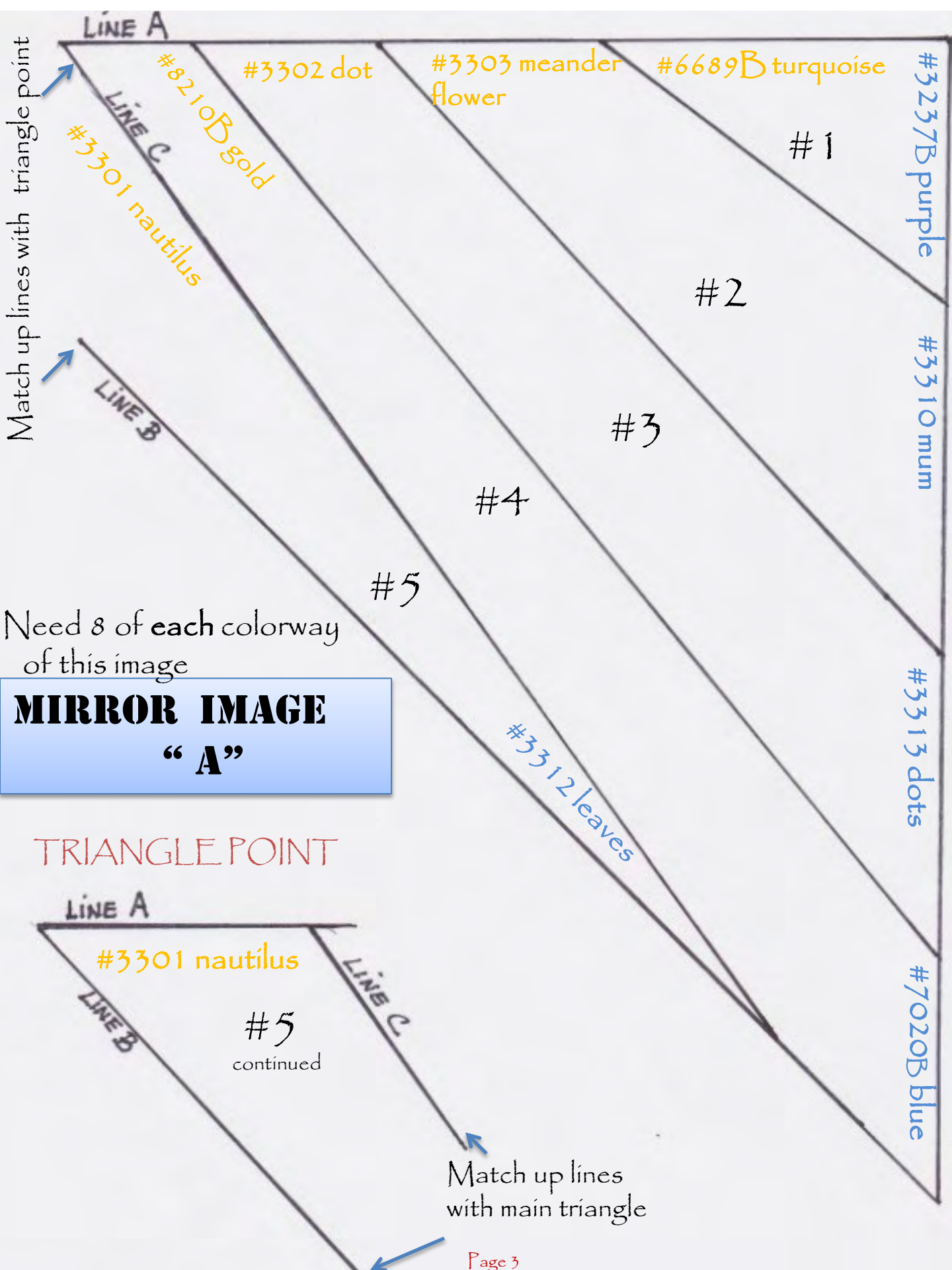
Half-Square Triangles made with
2 mirror image --"A" and "B"
Switching fabrics on section #1 and #4

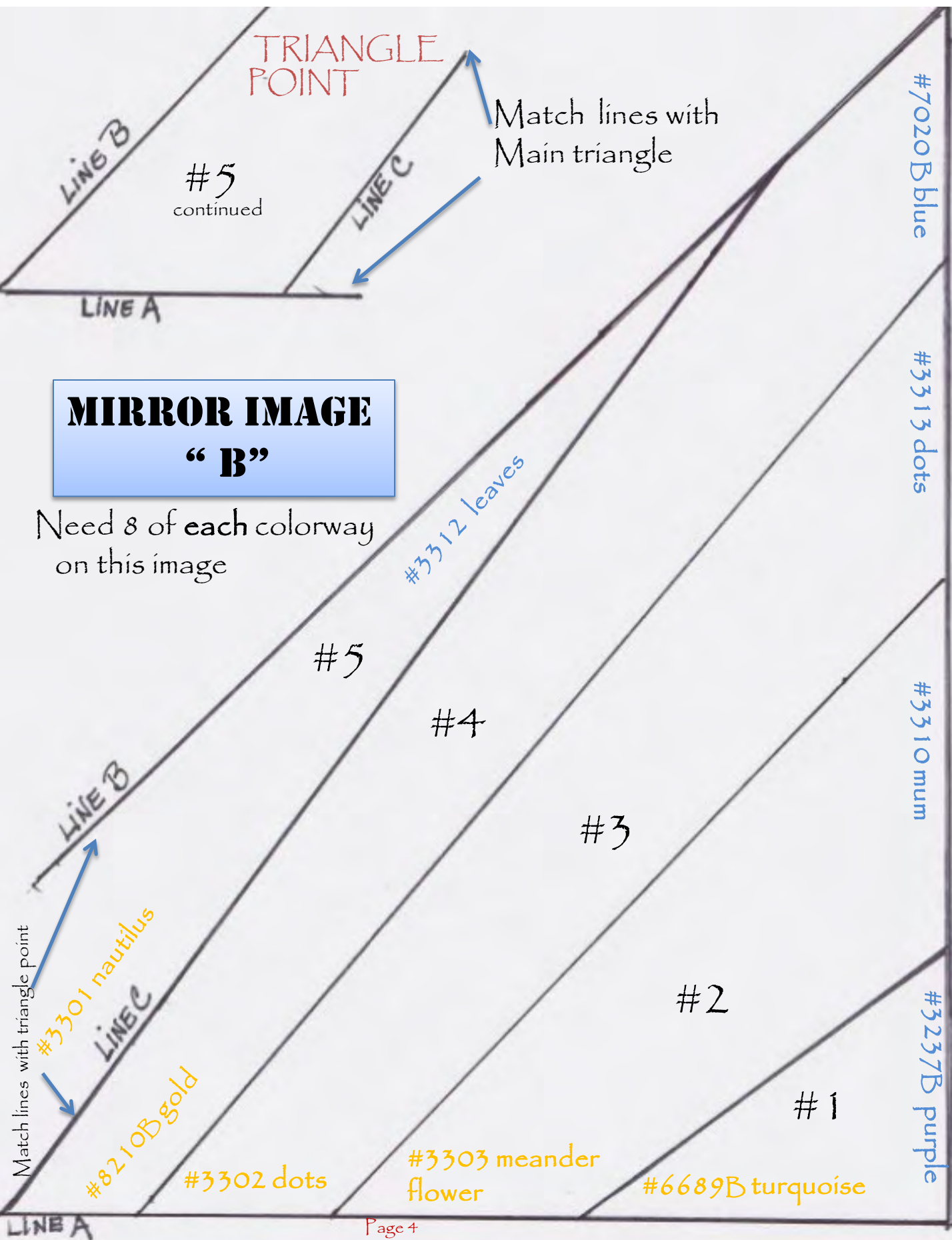


The amounts/ cut sizes listed above are approximate and should cover the section they will be used in.

example: the 8- 4" squares cut on the diagonal should cover sections marked #1 of the paper-pieced template.

Make sure they will give you the 1/4" all the way around the section # before you cut them otherwise you will waste the piece by pre-cutting. The yardage is what has been given for each fabric specifically for the blocks/triangles. What is left is for the rest of the quilt.





CUTTING CHART for all except Paper-Pieced Blocks

**Stack and label all cut pieces*

#3346 (off white background)—

--Cut 7 strips @ 1 1/2" x wof.

sub-cut 8 strips @ 1 1/2" x 14"

sub-cut 8 strips @ 1 1/2" x 16"

} frames for
center blocks

--Cut 8 strips @ 1 1/2" x wof.

sub cut into 160-1 1/2" x 2" rectangles*

(These are the "spacers" in between the 2" squares)

72 for center/88 for triangles and corner blocks

**If you want to "strip-piece" these "spacers" instead...do not sub-cut.*

--Cut 4 strips @ 2 1/2" x wof. (center outer border)

sub cut a 2 1/2" square off the end of each strip.

--Cut 2 strips @ 9 3/4" x wof

sub-cut into 8-9 3/4" squares

--Cut 4 strips @ 4 1/2" x wof.

sub-cut into 8-4 1/2" x 16" rectangles

} for setting triangles
and..
side sections of quilt

--Cut 2 strips @ 6" x wof.

sub-cut into 8-6" x 9 1/2" rectangles

--Cut 1 strip @ 2"-sub cut into 8-2"x3" rectangles-frames for Half-sq. Triangles

--Cut 4 strips @ 1 1/2"x wof

sub-cut into 8 strips @ 17" long each..frames for Half-sq. Triangles

--Cut 8 strips @ 2 1/2"x wof.

sub-cut into 8 strips @ 26" long.....frames for Half-sq. Triangles

*cut 14" left on each strip into 40-2 1/2" squares (yield 5 per strip) for 9 patch

--Cut 8 strips @ 2 1/2"x wof

sub-cut into 8 strips @ 2 1/2"x29"....frames for Half-sq. Triangles

* cut 11" left on each strip into 32-2 1/2" squares (yield 4 per strip) for 9 patch

--Cut 4 strips @ 2 1/2"x wof. Sub-cut into 8 2 1/2"x16" strips (corner frames)

--Cut 2 strips @ 2"xwof. Sub cut into 2-19 1/2" strips and 2-21" strips (corner frame)

#7020B (blue blender)—

--Cut 3 strips @ 2" x wof.

sub-cut into 56-2" squares*

**If you want to strip piece the strips to the 1 1/2" spacer strips and then cut—only sub-cut 24 for the star/cross centers*

--Cut 6 strips @ 1" x wof.

--Cut 3 -3'x3" squares (for the 4 gold points in center section)

#3312 (purple leaves)—

--Cut 5 strips @ 2"...sub-cut into 96-2" squares. *If you want to strip piece the strips to the 1 1/2" spacer strips and then cut—do not sub-cut*

CUTTING CHART continued.....

#8210B (gold blender)---

-Working with the 5"x12" piece cut from the Paper-piece fabric allotment:

---Cut 1- 3"x3" square and 5- 2"x2" squares (center section)

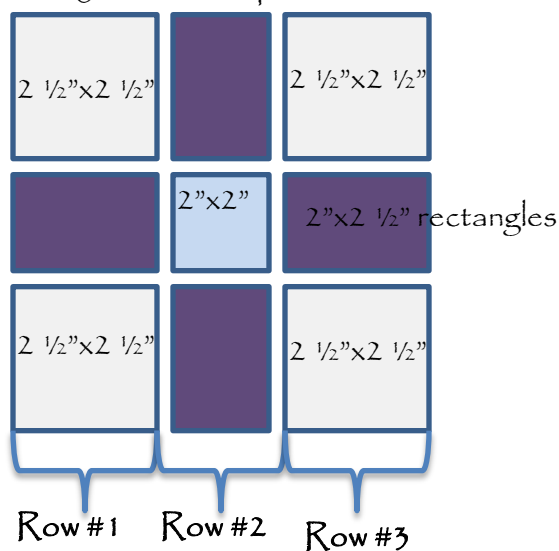
#3301 (gold tone nautilus)-

--Cut 1 strip @ 2"x wof. Sub-cut into 16- 2"x2" squares (center sashing)

#3237B (purple blender)--- 9 patches (stars/crosses)

--Cut 6 strips @ 2"x wof. Sub-cut into 96- 2"x2 1/2" rectangles (yield 16 per strip)
64- for 9-patch stars/crosses and 32- for stars/crosses made by creating borders in Center and Corners

Lay-out for 9 patch



INSTRUCTIONS for 9- Patch: *

Need 16 stars/crosses (6"x6" completed 9-patch)

Layout in stacks following diagram on left.

16 -#7020B-center 2"x2" sq.

64- #3237B- 2"x2 1/2" rectangles.. 16 in each stack

64-#3346 -2"x2" (background).. 16 in each stack

SEW together by starting with Row #2...flip top rectangle to the left-over onto Row #1- 2 1/2" x2 1/2" sq. (RST) and chain-stitch on the right side of these two. Pick up 2"x2" center square and flip to left-on top of rectangle... continue sewing on right side. Repeat for final rectangle and 2 1/2"x2 1/2" sq. Do not cut in between.

Now flip top piece in Row #3- to the left-onto Row #2 (which is sewn to row #1) (RST) and chain- stitch down right side...same as before, working with the top pieces only in each stack. Do not cut in between pieces. Rows are sewn together VERTICALLY. Press seams in opposite directions so they nestle and match when you sew them horizontally.

Horizontal Seam

RST- place top section onto middle section, matching seams. Sew . Now match middle section to bottom section, matching seams ...and sew. Press.

Repeat for all 16. Set aside. The other star/crosses are made when borders are pieced as in the Center.

*This is the Quilt in a Day...."flip to the left/sew on the right..." chain-sew method to sew blocks etc. together. If you have a method you would rather use--skip these instructions and just use the LAYOUT for a guide

SEWING/PIECING INSTRUCTIONS

#4. Take the 8 paper-pieced blocks made in steps#1-#3. Working with the 8 strips cut @ 1 ½"x14" sew a strip to 2 sides of each block- RST. Press out. Now take the 8 strips cut @ 1 ½"x16" and sew one to the top and one to the bottom of each block. All blocks are now "Framed".

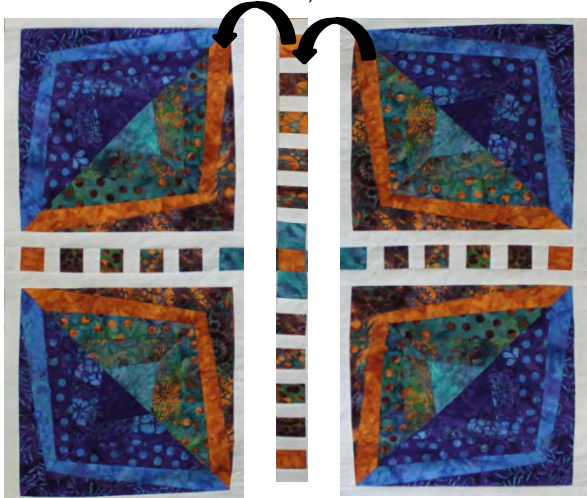
#5. For the sashing: Piece the spacers and the appropriate 2" squares to equal the specific # of strips shown below. Add the correct rectangles shown to the ends.

(If you chose to **not** sub-cut them...sew strips of 1 ½" (#3346) and 2" -#3312 (leaves) together. Cut into 2" pieces. Need 96 pieces..Press out. **Repeat same** for #3301 (gold tone nautilus) Need 16 pieces. Repeat same for #7020B (blue blender) Need 8. Repeat with #8210B (gold blender.) Need 16. Now piece these together to equal strips shown below...adding a spacer and a 2"x2 ½" rectangle in correct colorway to each end.)



#6. Following the Lay-out Picture...sew 1 gold tone strip to the gold-tone side of one block. Now sew another block (gold tone side) to the other side of the sashing...joining the 2 blocks together as shown below. **REPEAT** for other 2 blocks.

Step #7



#7. For center sashing—join 2 gold-tone strips with a 2" square (#8210B gold blender) to the turquoise #6689B rectangles. Sew the 2 block-strips to the sashing....as shown on left.

#8. For the outer sashing- 2 blue/purple tone strips will be joined together using a square made up of 3 half-square triangles.....

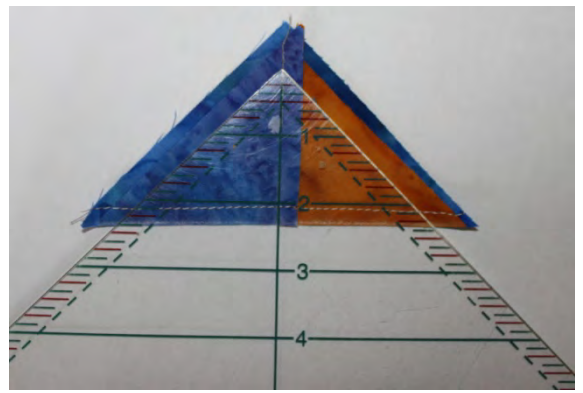
* to construct these: Take a 3" square #7020B and the 3" square of #8210B. Place one on top of the other-matching edges- and draw a diagonal line from 1 corner to the opposite corner. Sew ¼" on both sides of the line. Cut on line. Press open. **See picture on next page.**



Step #8 will yield
2 of these



Step #9

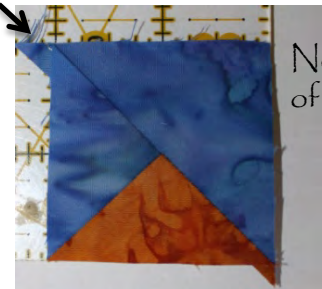


Square up to 2" using a
Triangle Square up Ruler

#9. Take 1 newly made half-square triangle and place it on top of a 3" #7020B. Draw a line, diagonally as before- sew $\frac{1}{4}$ " on each side...cut on line. **See picture above.** Yield 2. **REPEAT** same with other half-square triangle. You will have 4 total. Square up as shown above to 2".

Trim off "ears" on corners

(These will be used to join the blue/purple sashing strips.)



Note position
of square

#10. Join 2 strips of blue/purple sashing together with the half-square triangle just made—between the 2 #7020B (blue) squares and spacers on the ends. Position so gold point is in the right place. (**See picture page #10**) Sew to one side of center. Repeat for other side. Sides will measure 33".

#11. For TOP and BOTTOM- **repeat step #10** and then add a 2" square of #7020B to each end of #3237B (purple rectangle) Sew these strips, one to the top and one to the bottom. Your center will measure approx. $34\frac{1}{2}$ " x $34\frac{1}{2}$ ".

#12. Working with the 4-2 $\frac{1}{2}$ " strips for Center Outer Border and the 4-2 $\frac{1}{2}$ " squares cut off each:

Cut each strip to 33" long. To the 2 ends of each strip...sew a 2"x2 $\frac{1}{2}$ " purple (#3237B) rectangle. 8 total rectangles. Sew one strip to one side of Center and another strip to the other side. Make sure to match seams with the purple rectangle and the blue square.



Take last 2 strips and sew a 2 $\frac{1}{2}$ " square (#3346) to the end of each. (to the purple rectangle) Press seams so they nestle with the side strips. Sew one to the top and one to the bottom of Center. Press out. Center should measure 40"x40" at this point.

FRAMING HALF-SQUARE TRIANGLES

#13. 1st Frame: To each of the Paper-pieced, Half-square triangles...sew a strip of $1\frac{1}{2}" \times 17"$ - #3346 -to the right side, starting at the triangle point and sewing down to base-do not cut off extra- the extra at the base will be trimmed later.. Press out.

Repeat on left side of triangle. Press out.

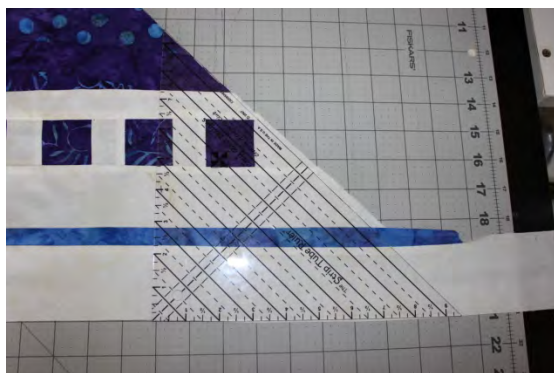
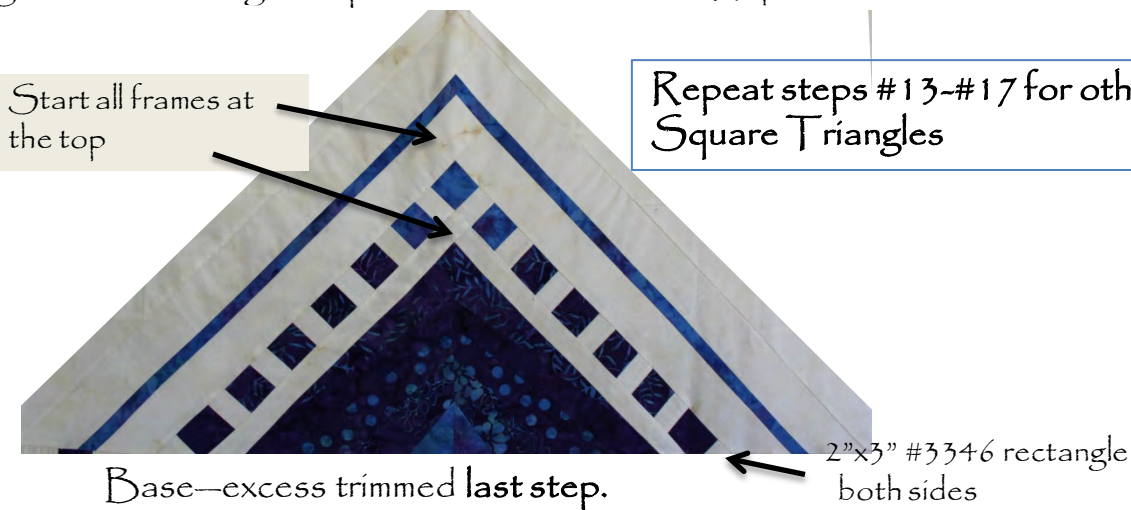
#14. 2nd Frame: Next add a frame of blue/purple sashing... but **before sewing on**—trim the purple rectangle to a 2" square and then add to it a 2"x3" #3346 rectangle. This part will be at the base. (see diagram below) sew on to right side and press out. Repeat same for left side but to this strip.. Also add a 2" square of #7020B (blue blender) to the opposite end where the blue sq. and spacer are. Press out.

#15. 3rd Frame: Take a $2\frac{1}{2}" \times 26"$ strip of #3346 and sew to right side of triangle...start at top as before. Do not trim off excess. Press out. Repeat for left side. Press out.

#16. 4th Frame: These are the 1" strips of #7020B (blue blender) These strips will be 29" long each. You will have to piece some together to equal 29".

Sew a 1"x29" strip to right side of triangle (start at top). Press out. Sew another 29" strip to left side...Press out. Wait to trim excess.

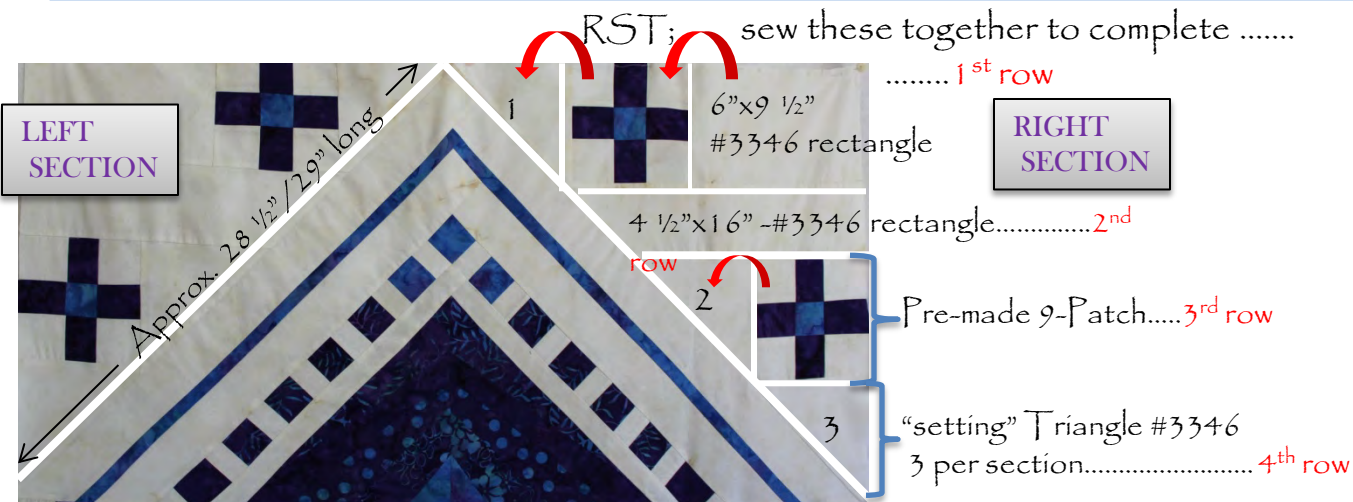
#17. 5th/final Frame: Working with the $2\frac{1}{2}" \times 29"$ strips of #3346—sew one to the right side...starting at top as before. Press out. Repeat for left side.



Trim Half square triangles before sewing to frame center.

When all have been "framed"...trim excess at base using cutting mat and Ruler -keeping 45 degree angle.

SETTING TRIANGLES and 9-PATCH STARS/CROSSES



Setting Triangles are made with the $8-9\frac{3}{4}$ " squares of background fabric #3346. Draw a line from each corner to opposite corner diagonally. Cut on these 2 lines—yield 4 triangles from each square....total 32. Need 24.

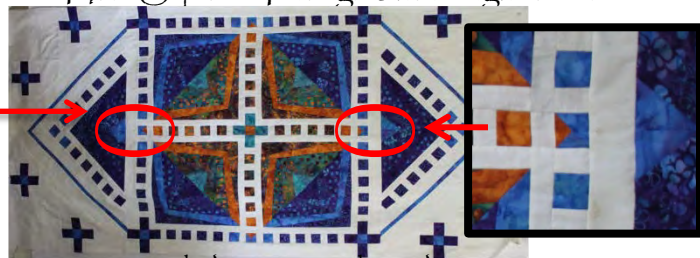
#18. Sew "right section" together as shown in picture above...starting with row #1.

#19. Repeat for "left section" the same steps and order. Trim any excess from $4\frac{1}{2}$ "x16" rectangle—AFTER section is complete.

#20. Center "right section" to Framed Half-Square Triangle in position shown. Make sure there is slight overlap of ends of setting triangles 1 & 3 by $\frac{1}{4}$ ". Sew seam. Press out. Repeat for "left section".

#21. REPEAT above 3 more times until all 4 Framed Half-Square Triangles have right and left sections.

#22. Sew one of these just made- to the Center...matching center seam of H.S.T to gold point in sashing on Center...REPEAT for other side.



CORNER SQUARES:

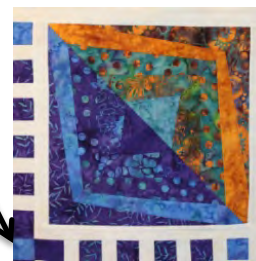
*Working with the Corner Blocks made in step #3—and the pieced sashing strips (blue/purple colorway) left from step #5.....

#23. Sew a "sashing" strip to blue/purple side of block as shown

#24. Add 2nd sashing (with 2" blue square added to end purple rectangle) to other blue/purple side ..as shown

#25. Working with the $8-2\frac{1}{2}$ " strips cut @16 "each...

Sew a purple 2 "x $2\frac{1}{2}$ " rectangle (#3237B) to one end of each strip. To 4 of these- sew a $2\frac{1}{2}$ "x $2\frac{1}{2}$ " square (#3346) to the purple rectangle just sewn on. Sew the strips ending with the purple rectangles first—to one sashing side. Sew the other strip ending with the 2 "x $2\frac{1}{2}$ " square to the other sashing side—matching and nestling seams to form stars/crosses.



CORNERBLOCKS...final border:

#26. To the 4 corner blocks—border 1 outside edge on the gold-tone side with a 2"x 19 1/2" strip of #3346. Press out.

Border the other edge on the gold-tone side with a 2"x 21" strip of #3346. Press out. Block should measure 21"x21".

#27. Sew one corner block to each end of the 2 pieced Half-Square Triangle sections left. Matching centers as before—sew one to top and one to bottom of quilt.

. See Picture:



REPEAT FOR BOTTOM SECTION

The quilt is now finished and ready to be quilted. Any questions or concerns please contact Batik Textiles and ask for Susie - or email me at ... susiequilts1985@hotmail.com

I have tried to explain all the steps in more words than probably needed. There are very basic techniques that an average quilter can translate into personal-preference methods. The Paper-piecing method I have mentioned is the easiest one I have found --- even for beginners! (thedesignersworkshop.com)

I hope you have enjoyed the journey!!